



2.5 GALLON (NON-ASME) PRESSURE TANK

TEFLON COATED
PRODUCT INFORMATION



51-201 SINGLE REGULATED
51-202 DOUBLE REGULATED

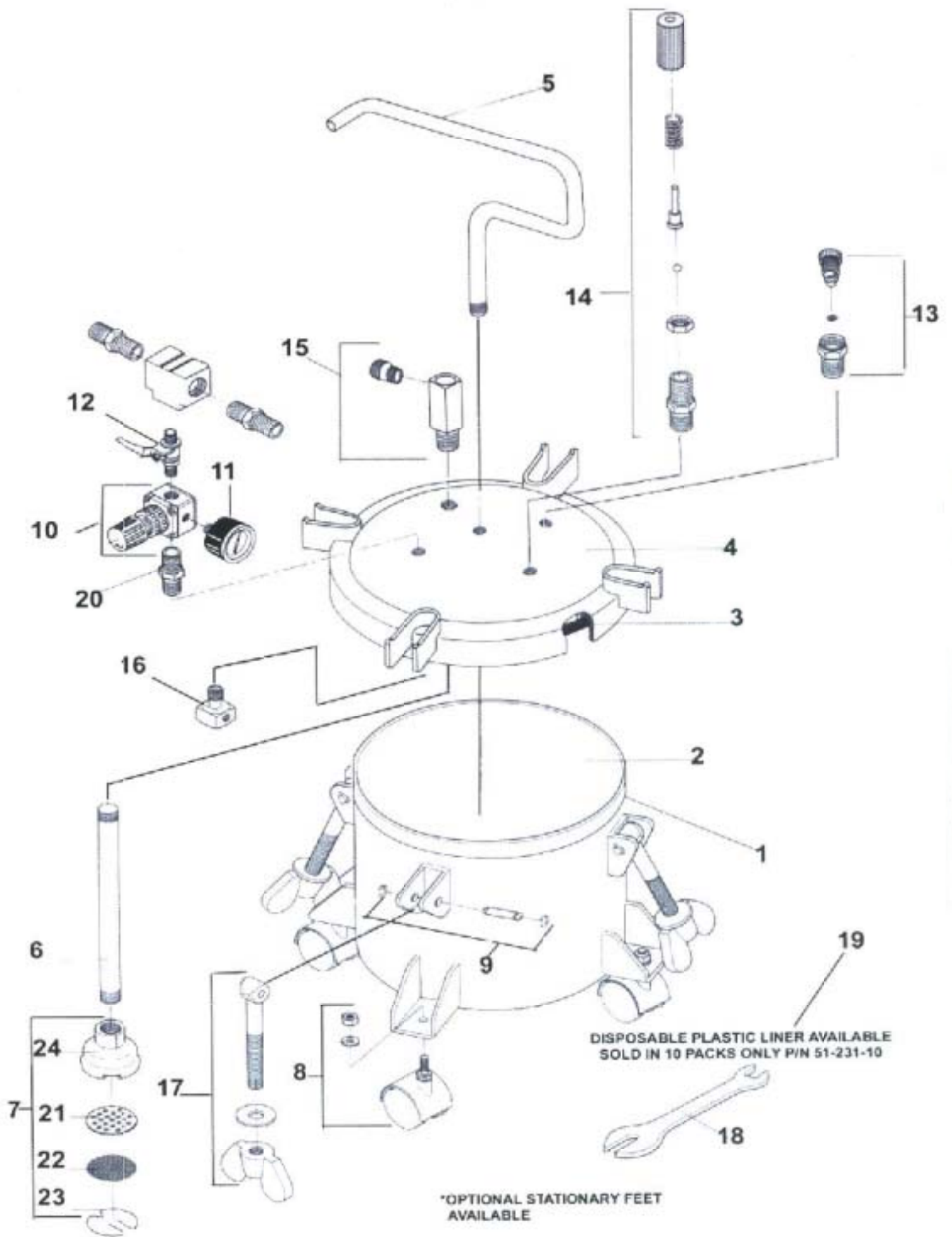
GENERAL INFORMATION

This pressure tank is equipped with either single or double air pressure regulation, pressure safety relief valve, tank vent valve, an aluminum inner tank liner, and four caster wheels.

CAUTION!

1. Maximum tank working pressure is 80 psi. The safety relief valve is designed to protect the tank against excessive pressures. **DO NOT** attempt to make any adjustments to this valve. If this valve begins to vent air pressure, reduce the setting on the inlet regulator.
2. **DO NOT** alter the tank in any way by welding, drilling or machining as this may weaken the structure of the tank.
3. To prevent hazardous static electric sparks from occurring, always ground the pressure tank by connecting a 12 ga. wire to the tank and to a known earth ground.
4. Halogenated solvents will react chemically with aluminum and may cause an explosion. Examples of halogenated solvents are 111 trichlorethane and methylene chloride. **DO NOT use the removable aluminum tank liner with any halogenated solvents.**
5. Be sure tank pressure is completely relieved before attempting to remove the tank cover or material fill cap. Shut off the main air supply to the tank and vent the pressure using the tank vent valve located on the tank cover.

ITEM NO.	PART NUMBER	DESCRIPTION
1	51-226	TANK SHELL
2	51-227	TANK INNER LINER (ALUMINUM) NOT SHOWN
3	51-220	GASKET (AVAILABLE IN 3 PACKS P/N 51-220-3)
4	51-228	TANK LID ASSEMBLY
5	51-235	HANDLE
6	51-223	FLUID PICK-UP TUBE
7	51-232	INLET STRAINER ASSEMBLY
8	51-224	CASTER (4 REQ'D) (OPTIONAL STATIONARY FEET AVAILABLE P/N 51-252)
9	51-233	PIN ASSEMBLY
10	51-222	AIR REGULATOR (OPTIONAL SECOND REGULATOR ASSEMBLY P/N 51-222)
11	52-56	PRESSURE GAGE
12	51-150	AIR SHUT OFF VALVE
13	51-234	TANK VENT VALVE
14	51-229	SAFETY RELIEF VALVE ASSEMBLY
15	51-230	FLUID OUTLET FITTING
16	51-237	AIR FLOW DIFFUSER
17	51-236	EYE BOLT ASSEMBLY
18	51-225	WRENCH
19	51-231-10	DISPOSABLE PLASTIC LINER (10 PACK)
20	51-239	DOUBLE MALE NIPPLE
21	51-254	INLET SCREEN BACKING PLATE
22	51-248	INLET SCREEN
23	51-255	INLET SCREEN RETAINING CLIP
24	51-256	INLET STRAINER BODY



PRESSURE TANKS AVAILABLE FROM C.A.Technologies



2.5 GALLON PRESSURE TANK TEFLON COATED
51-201 SINGLE REGULATED
51-202 DOUBLE REGULATED



2.5 GALLON PRESSURE WITH AIR POWERED AGITATION
51-203 SINGLE REGULATED
51-204 DOUBLE REGULATED



5 GALLON TANK
WITH NO AGITATION
51-507 SINGLE REGULATED
51-508 DOUBLE REGULATED



5 GALLON TANK
WITH MANUAL AGITATION
51-501 SINGLE REGULATED
51-502 DOUBLE REGULATED



5 GALLON TANK
WITH AIR POWERED AGITATION
51-503 SINGLE REGULATED
51-504 DOUBLE REGULATED



10 GALLON TANK
WITH NO AGITATION
51-551 SINGLE REGULATED
51-552 DOUBLE REGULATED



10 GALLON TANK
WITH MANUAL AGITATION
51-557 SINGLE REGULATED
51-558 DOUBLE REGULATED



10 GALLON TANK
WITH AIR POWERED AGITATION
51-553 SINGLE REGULATED
51-554 DOUBLE REGULATED